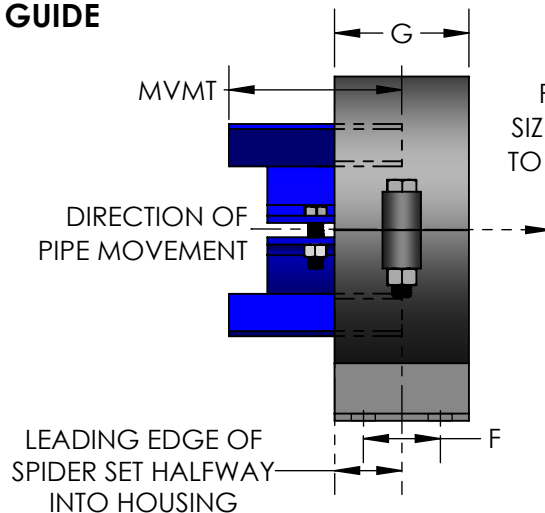
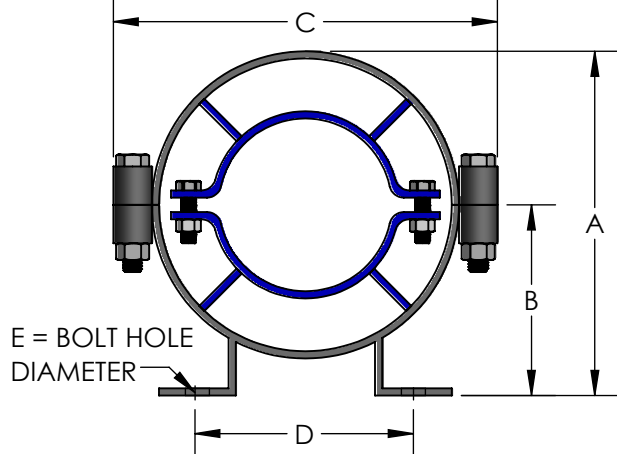
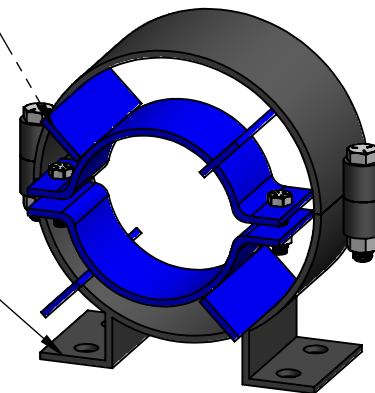


1" MAX INSULATION STYLE IV SPIDER TYPE GUIDE



SPIDER SPACERS CENTER PIPE IN HOUSING AND ARE SIZED TO ALLOW INSULATION TO BE PACKED AROUND PIPE

FEET CAN BE BOLTED OR WELDED TO STRUCTURE



QTY	SIZE	INS	MODEL	A	B	C	D	E	F	G	MVMT	WEIGHT
	1/2"	1"	PGSP00502304	3-1/2"	5-7/8"	6-1/8"	4-1/8"	5/8"	1-3/4"	3"	4"	7 LBS
	3/4"	1"	PGSP00752304	3-1/2"	5-7/8"	6-1/8"	4-1/8"	5/8"	1-3/4"	3"	4"	7 LBS
	1"	1"	PGSP01002304	3-1/2"	5-7/8"	6-1/8"	4-1/8"	5/8"	1-3/4"	3"	4"	7 LBS
	1-1/4"	1"	PGSP01252304	3-1/2"	5-7/8"	6-1/8"	4-1/8"	5/8"	1-3/4"	3"	4"	7 LBS
	1-1/2"	1"	PGSP01502404	4"	6-3/4"	7-1/8"	4-3/8"	5/8"	1-3/4"	3"	4"	8 LBS
	2"	1"	PGSP02002404	4"	6-3/4"	7-1/8"	4-3/8"	5/8"	1-3/4"	3"	4"	8 LBS
	2-1/2"	1"	PGSP02502504	4-3/8"	7-5/8"	8-1/8"	5-1/8"	5/8"	1-3/4"	3"	4"	9 LBS
	3"	1"	PGSP03002504	4-3/8"	7-5/8"	8-1/8"	5-1/8"	5/8"	1-3/4"	3"	4"	9 LBS
	4"	1"	PGSP04002604	5-1/4"	9-1/4"	10-1/8"	6-1/8"	5/8"	1-3/4"	3"	4"	11 LBS
	5"	1"	PGSP05002706	6-1/4"	11-5/8"	12-1/8"	7"	5/8"	2-3/4"	4"	6"	17 LBS
	6"	1"	PGSP06002706	6-1/4"	11-5/8"	12-1/8"	7"	5/8"	2-3/4"	4"	6"	17 LBS
	8"	1"	PGSP08002706	7"	13-3/8"	14-1/8"	8-1/4"	5/8"	2-3/4"	4"	6"	20 LBS
	10"	1"	PGSP10003008	8-7/8"	17"	18-1/8"	10-7/8"	3/4"	4"	6"	8"	48 LBS
	12"	1"	PGSP12003108	9-3/4"	18-3/4"	20-1/8"	11-7/8"	3/4"	4"	6"	8"	54 LBS

MATERIALS OF CONSTRUCTION

MILD STEEL CONSTRUCTION - ASTM A36 AND A569

FINISH - PAINTED, BLACK

FASTENERS - GRADE 2 (INDUSTRIAL)

MODELS 23-28 HAVE 2 BOLTS

MODELS 29-36 HAVE 4 BOLTS

ADSCO

SPIDER TYPE GUIDE

REV.

DATE

SCALE:

DRAWING NUMBER:

N/A

PGSP-1MAX

DRAWN BY: DR

DATE: 11/09/2022

APPROVED:

DATE: